

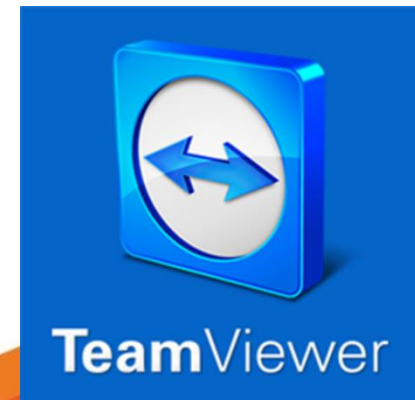
LEDEditor Tutorial



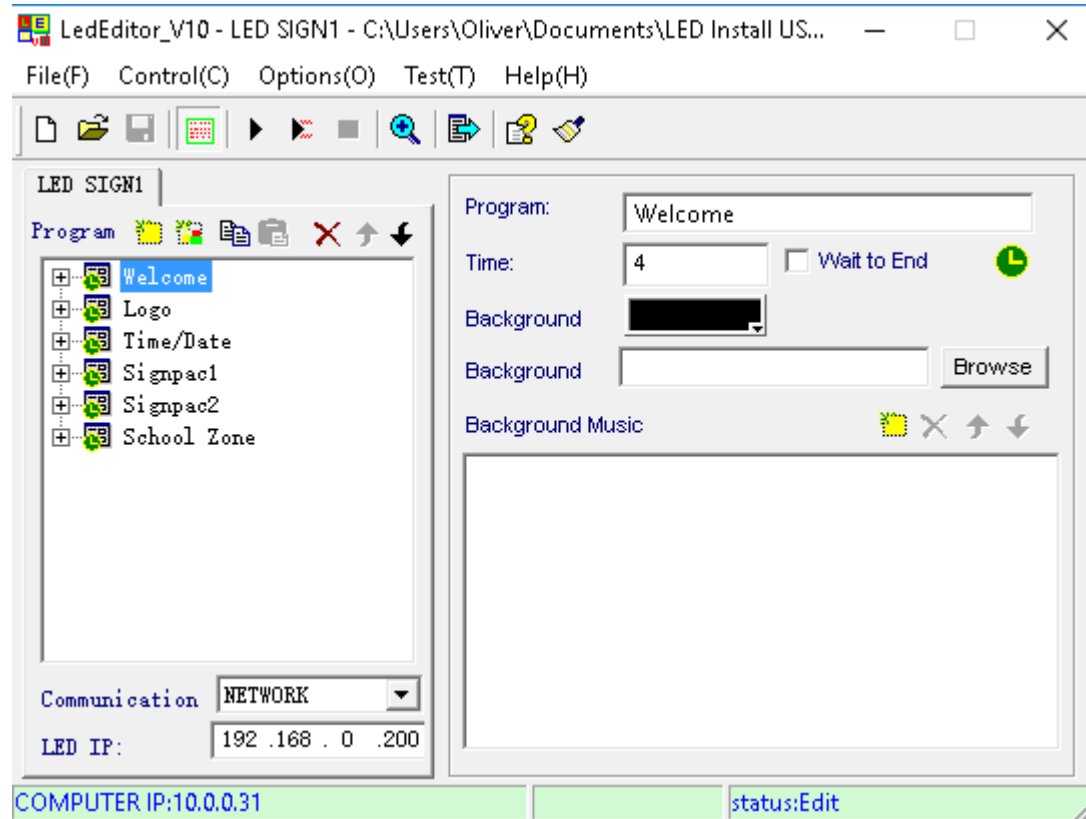
OPENING LEEDITOR

Once your new Signpac Laptop has booted to the windows desktop, 3 important shortcuts will be available to you.

- LEDEditorV10 – Our main software used to program the sign
- LEDEditor Manual – A fully featured PDF guide
- Teamviewer – A program to allow remote assistance

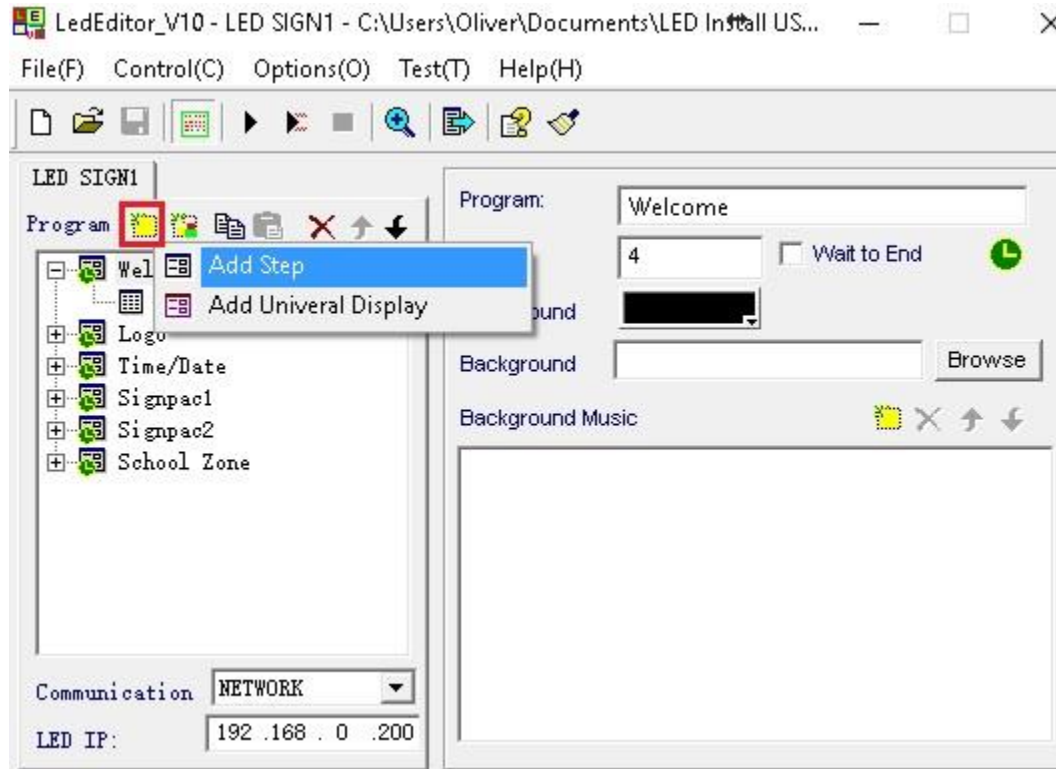


LEDEDITOR INTERFACE



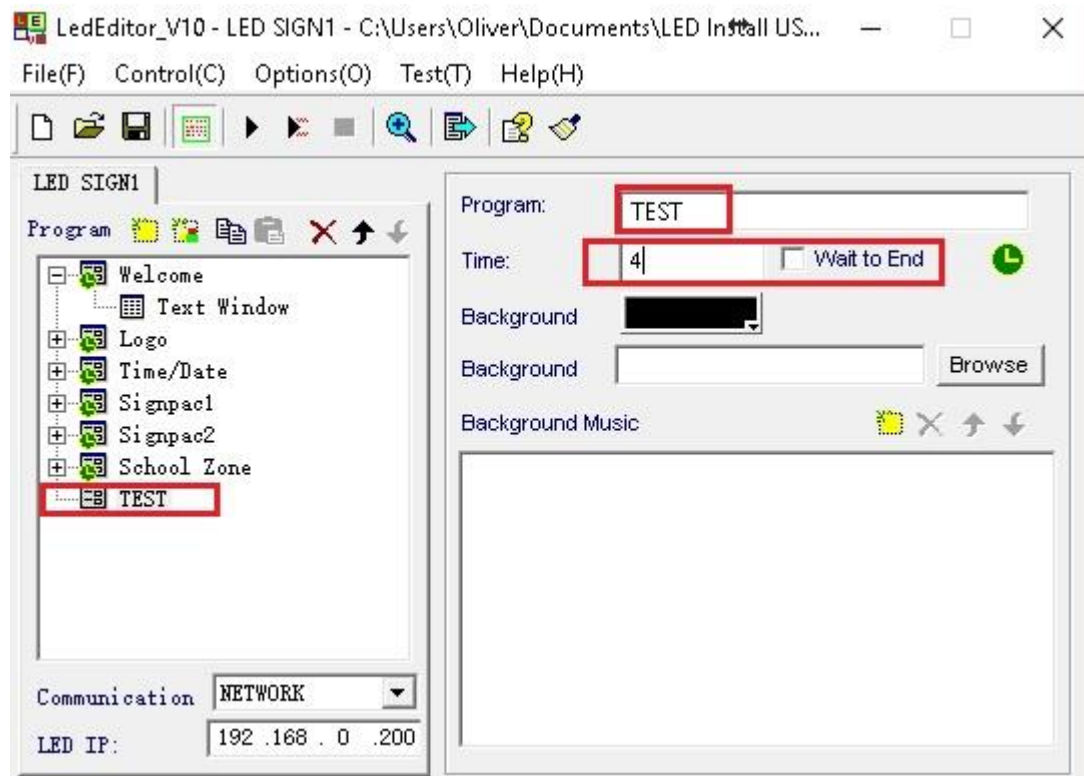
This is our main interface

ADDING A STEP



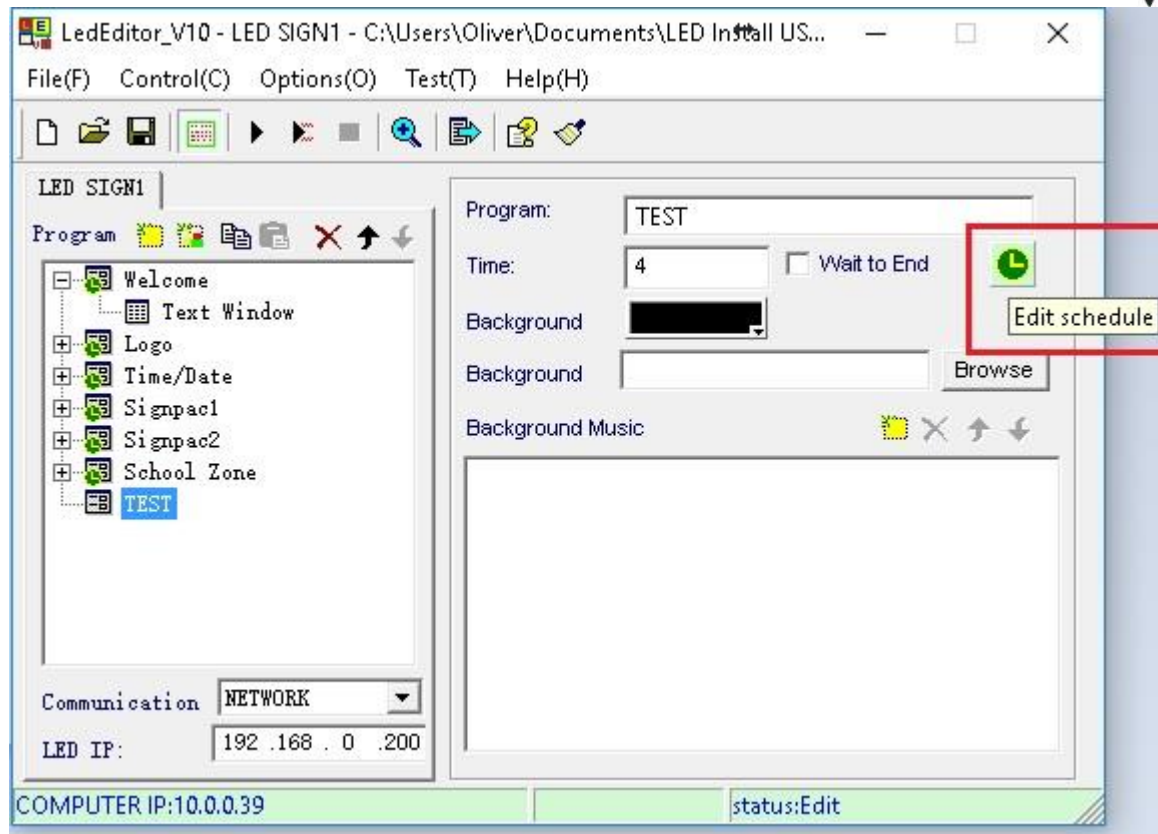
To begin we use the “yellow post-it note”

RENAMING THE STEP



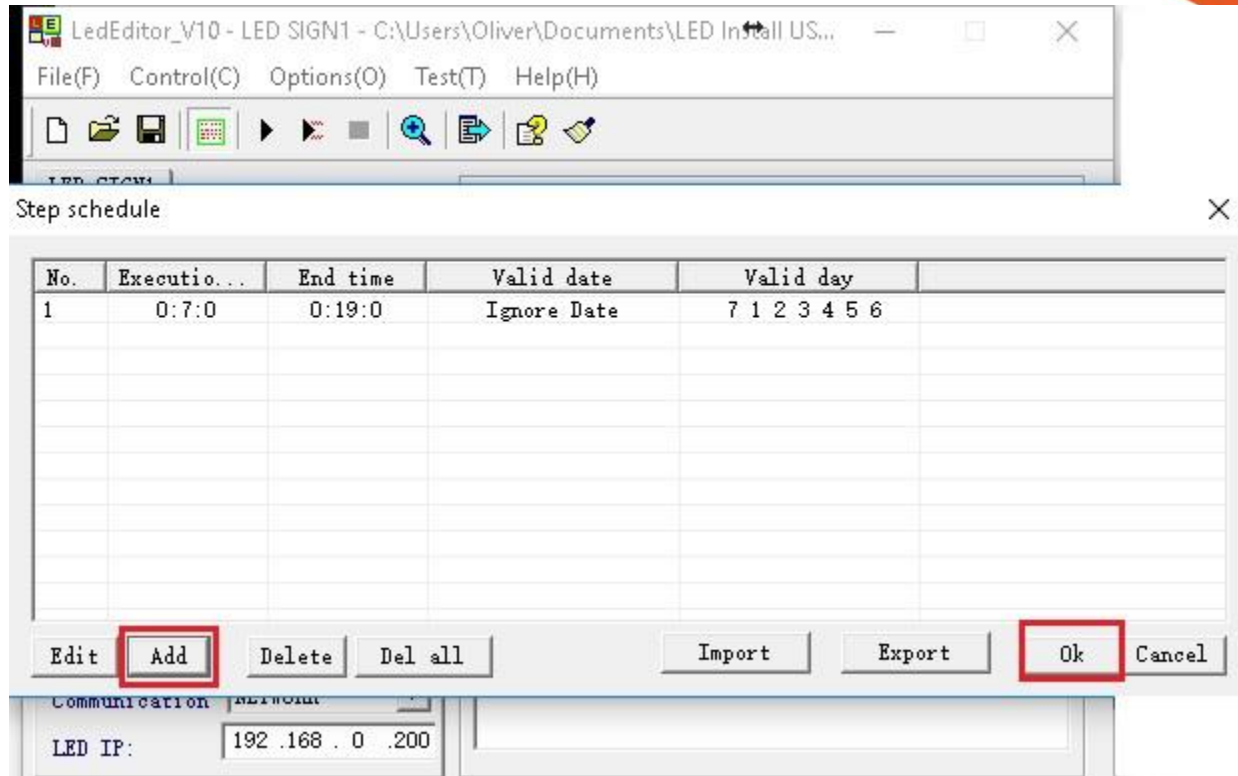
Rename the new step and choose how long it will display

ADDING A SCHEDULE



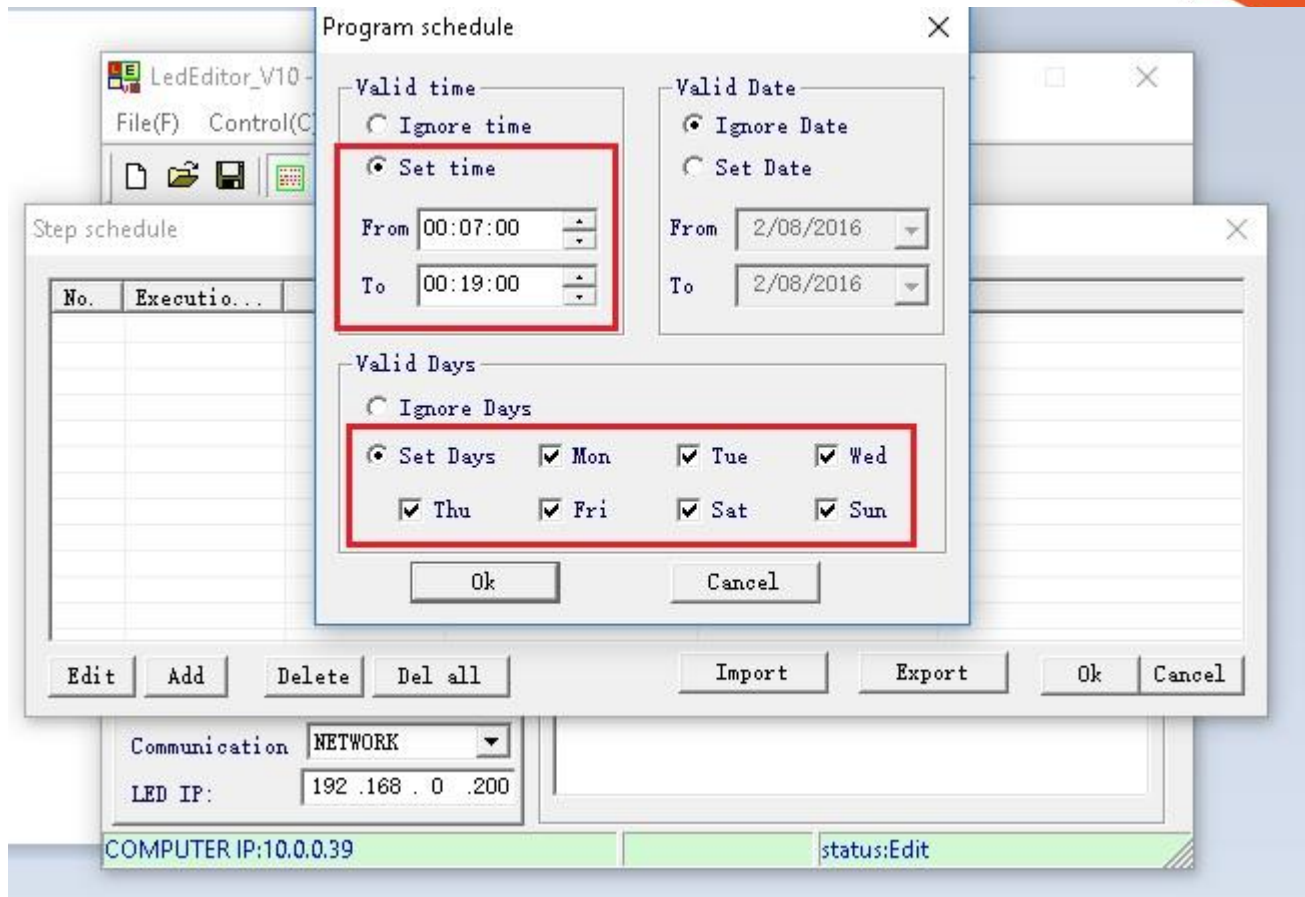
We can edit the schedule by clicking the clock on the right hand side, note that on the left hand side no green clock is shown yet

ADDING A SCHEDULE



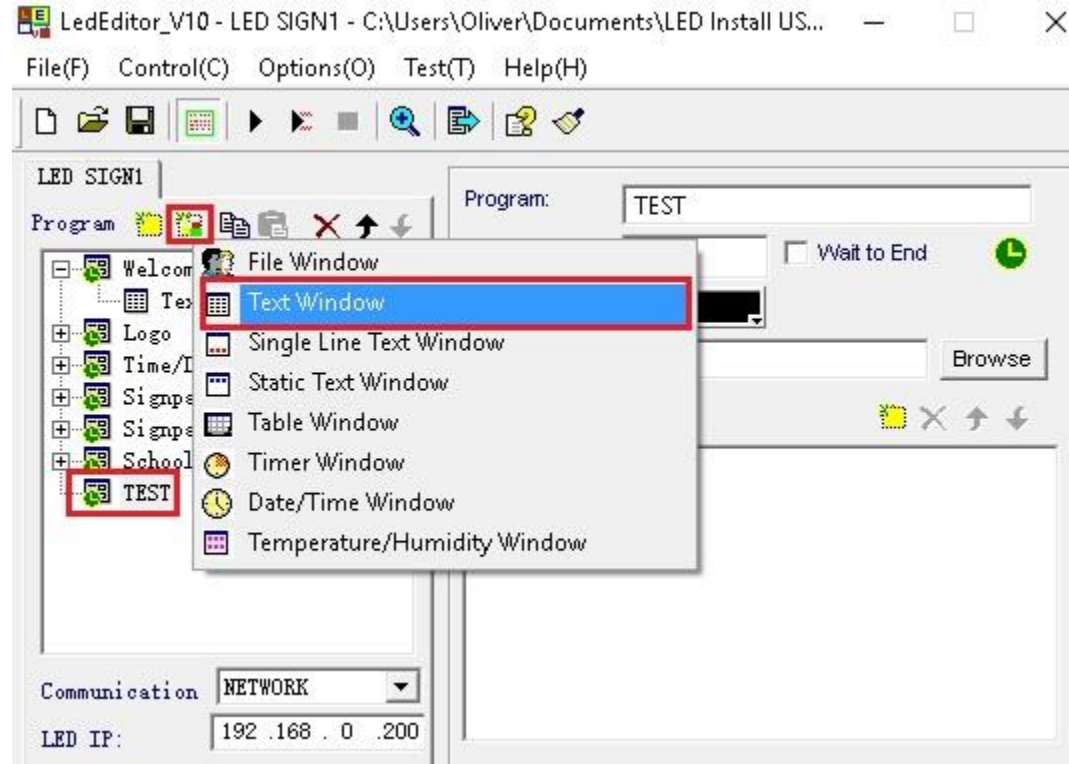
Click add to start setting a new schedule, click ok to accept the current table

ADDING A SCHEDULE



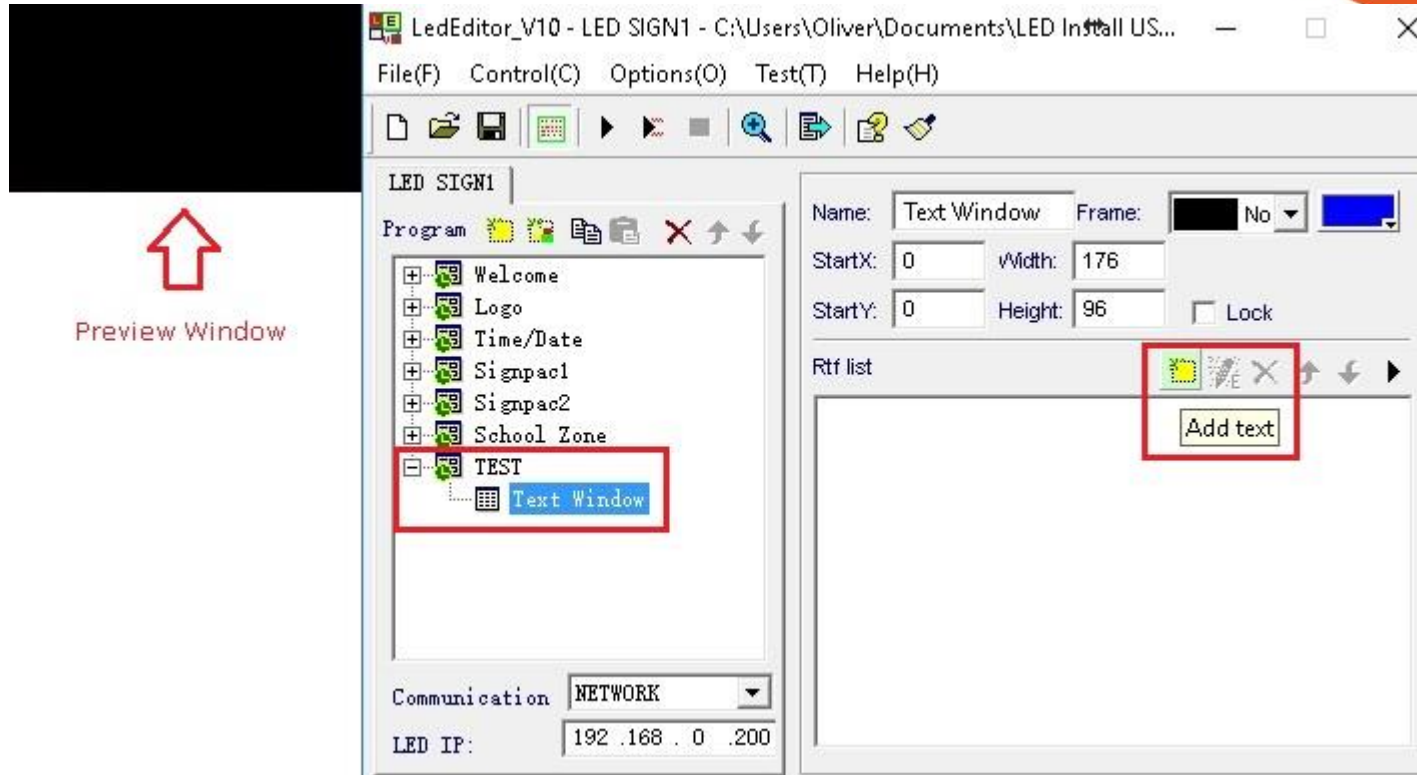
You must tick every day you wish the window to show on the sign even if it is 7 days a week

ADDING A TEXT WINDOW



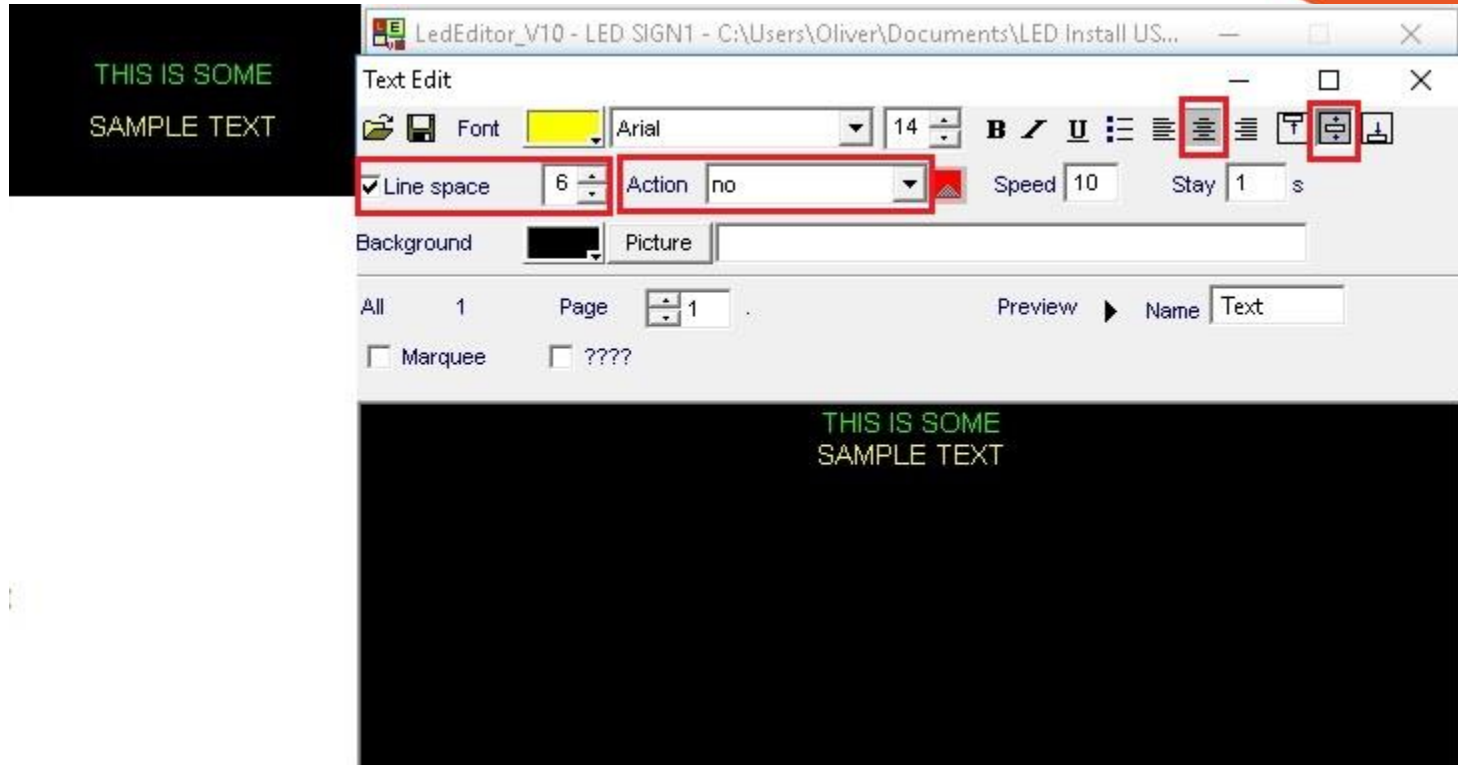
Click the multicoloured button and choose text window

ADDING A TEXT WINDOW



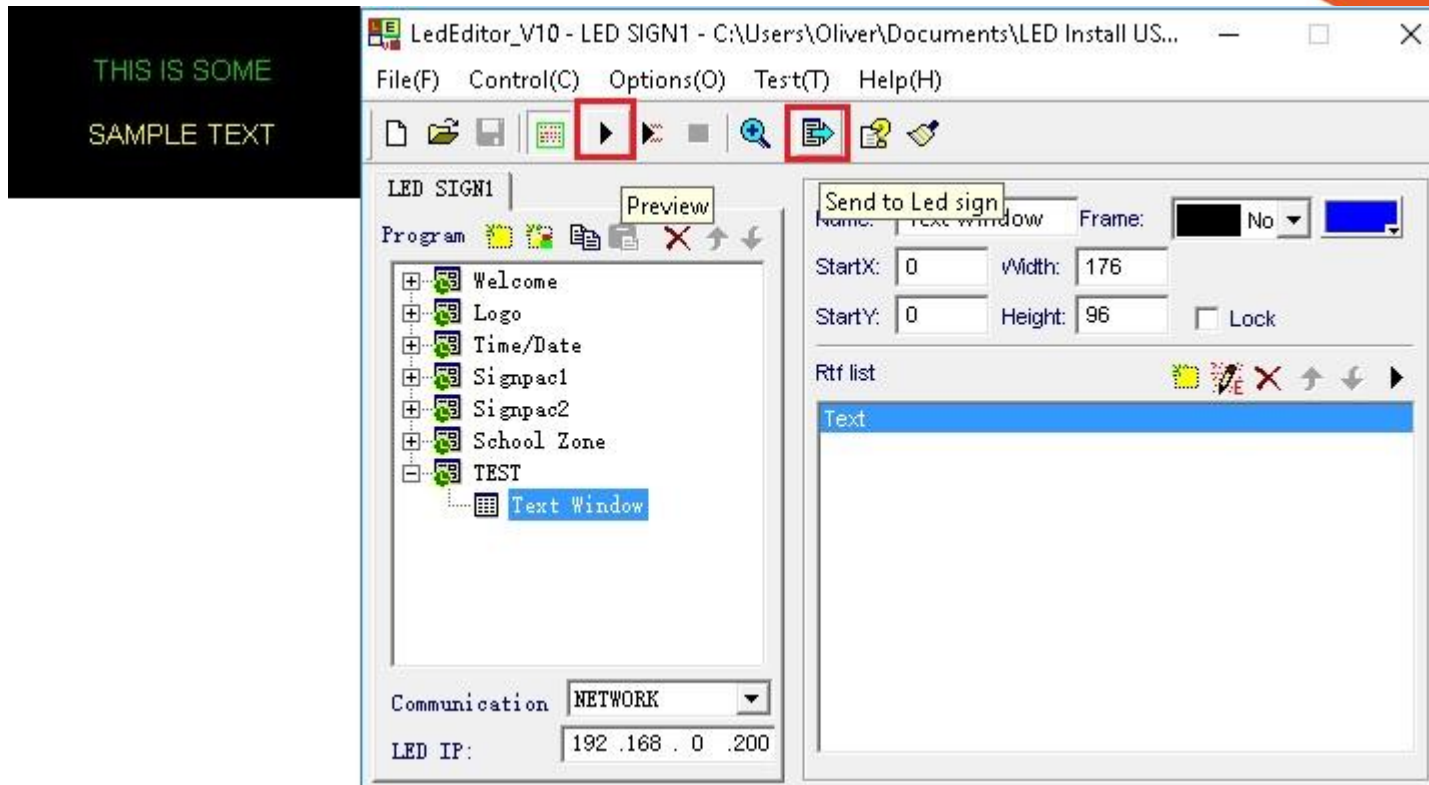
Once a text window has been selected, you may add contents by clicking the yellow post it note on the right hand side

EDITING A TEXT WINDOW



Click the **X** up the top right corner to return to the main interface when you have completed editing your text, no need to save here.

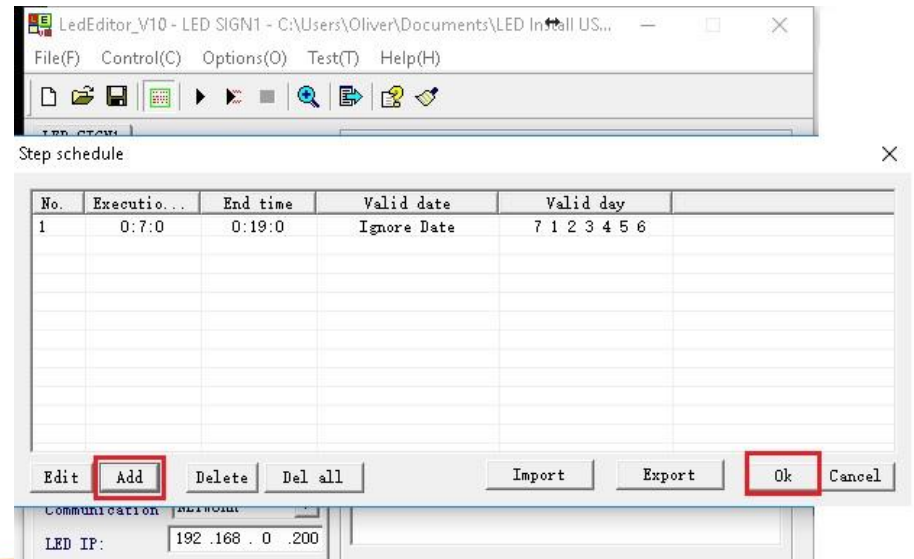
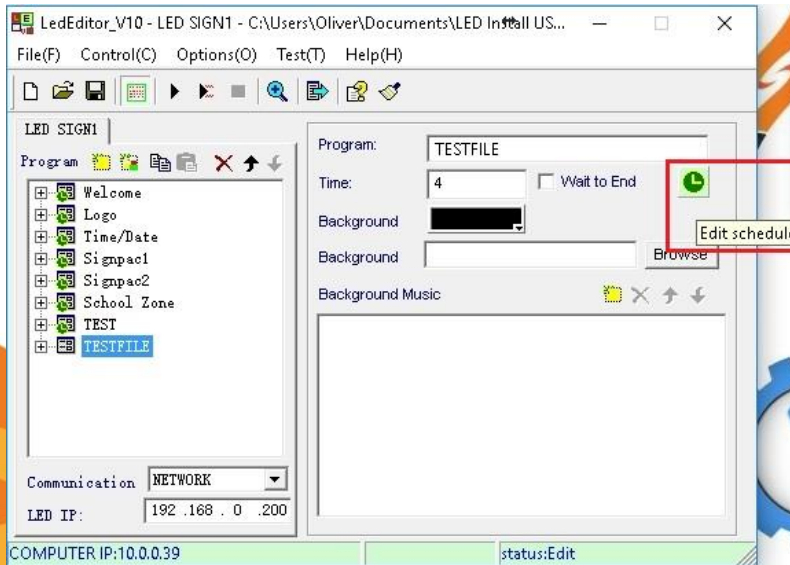
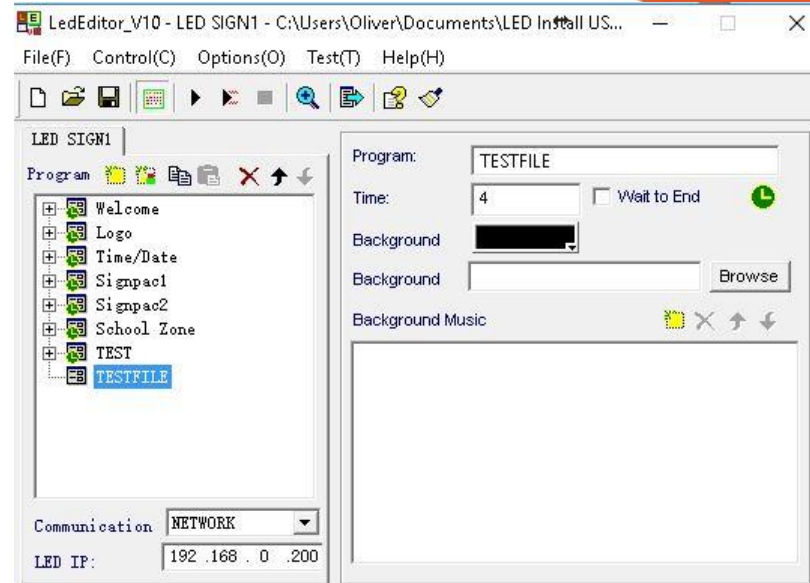
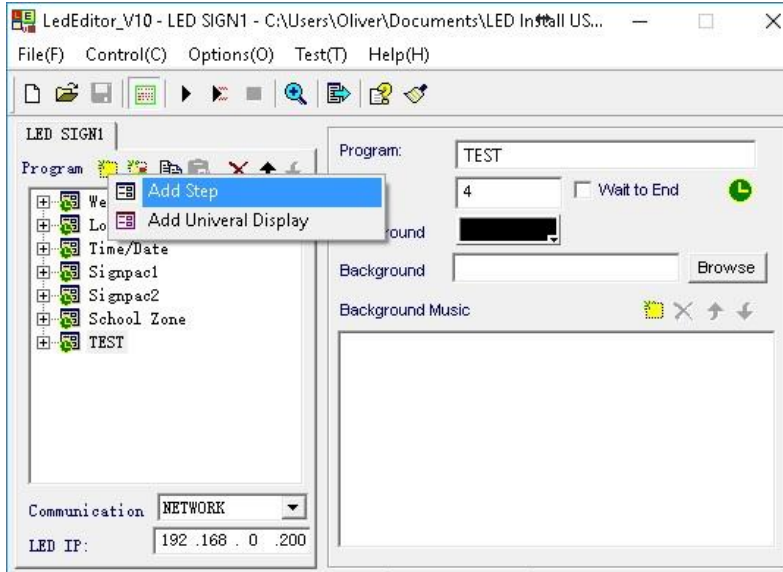
SENDING PROGRAM TO SIGN



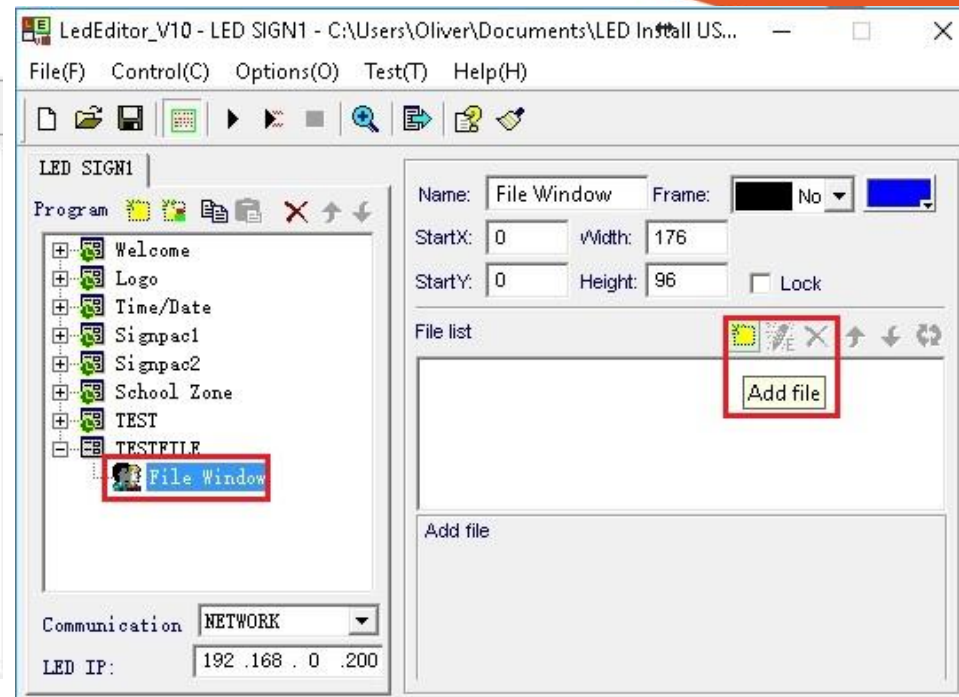
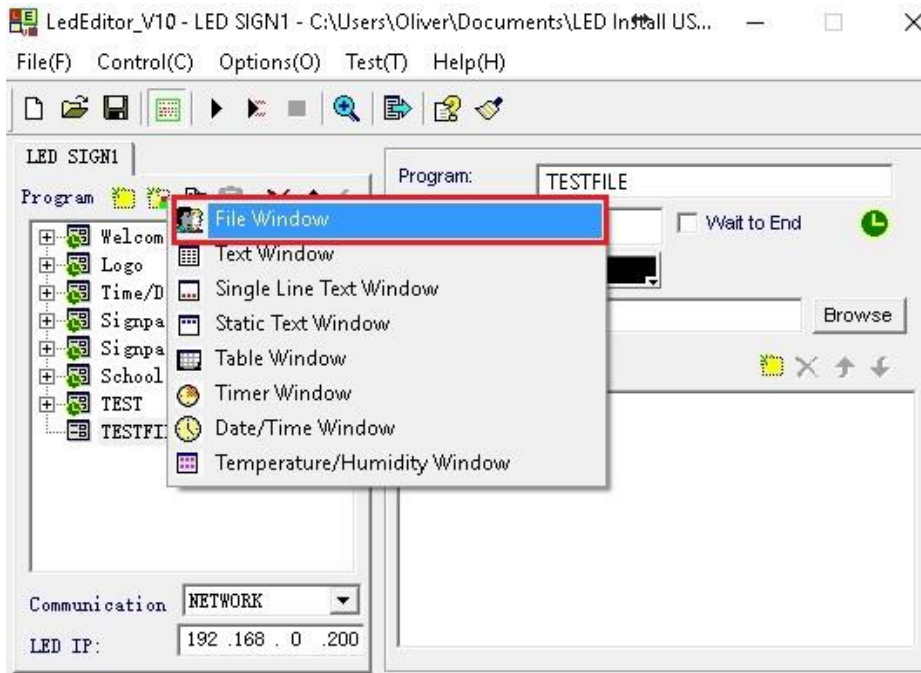
Once our text is complete, we can preview the pages before uploading changed data to the sign

ADDING A FILE WINDOW

ADDING A STEP FOR A FILE WINDOW

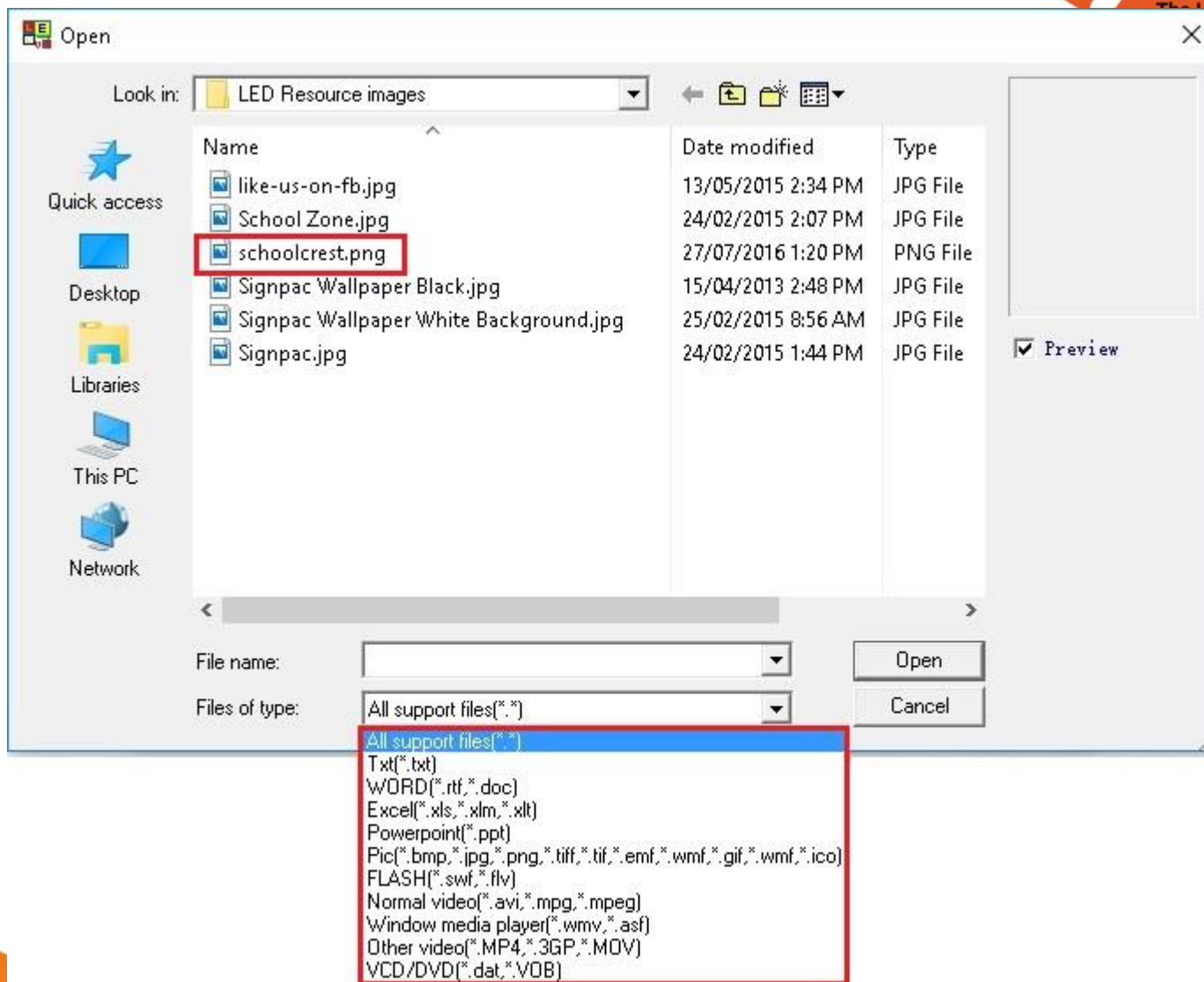


ADDING A FILE WINDOW



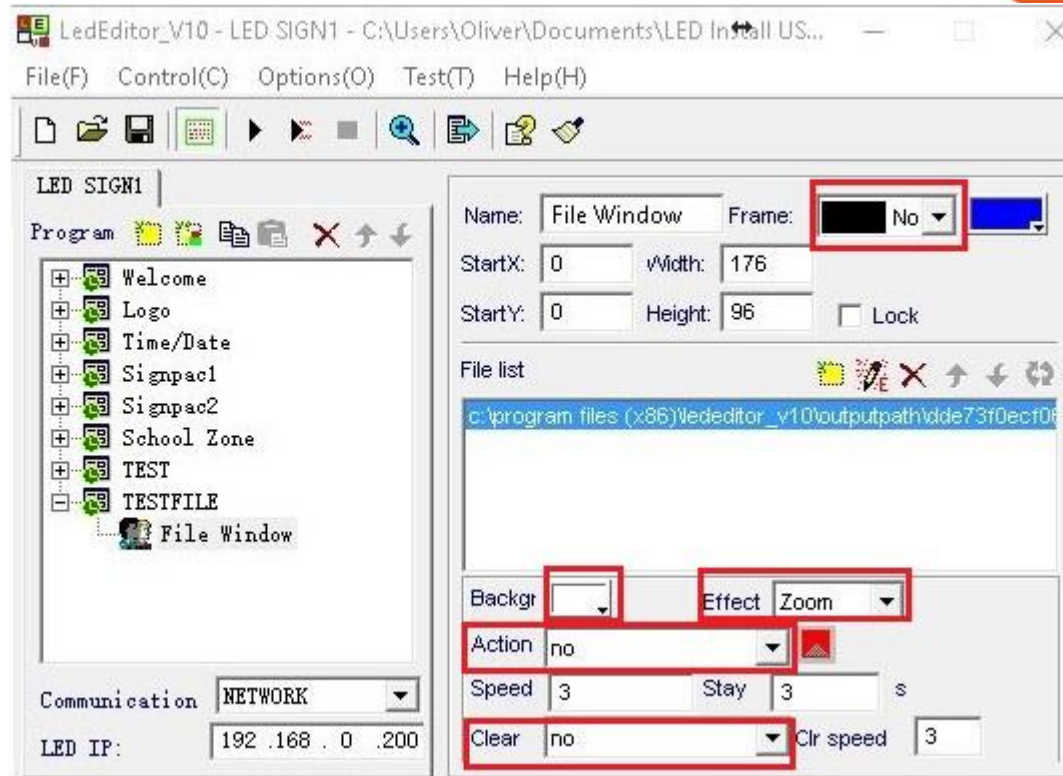
Create a file window by clicking on the multicoloured post-it note again and selecting file window, then click add file in the right hand panel

ADDING FILE TYPES



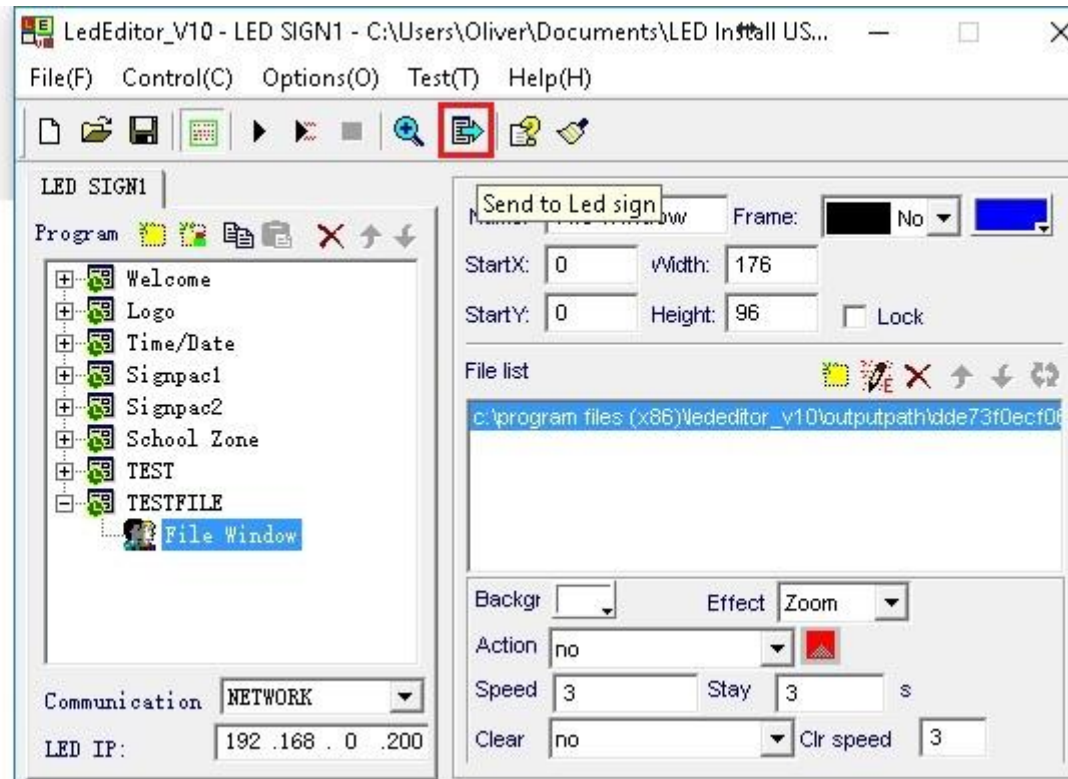
The software supports many file formats for upload

EDITING A FILE WINDOW



Make sure you turn the actions off first, then match the background colour to that of the image to create a seamless window

SEND FILE WINDOW TO SIGN

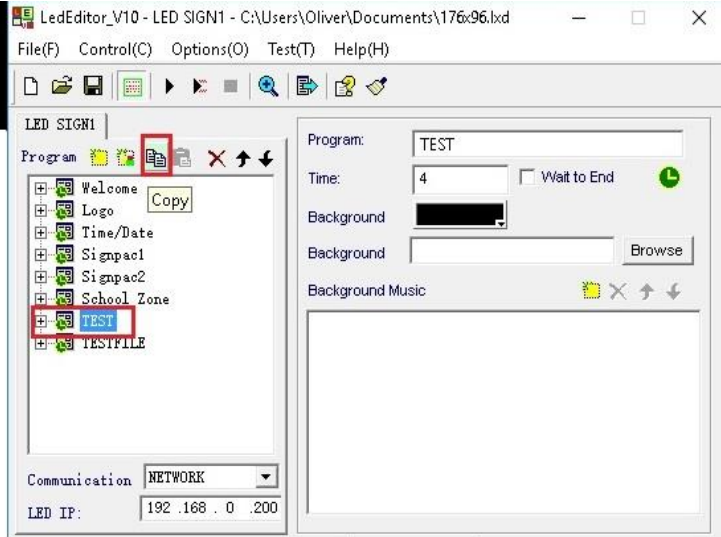


Send the latest file window update to the sign

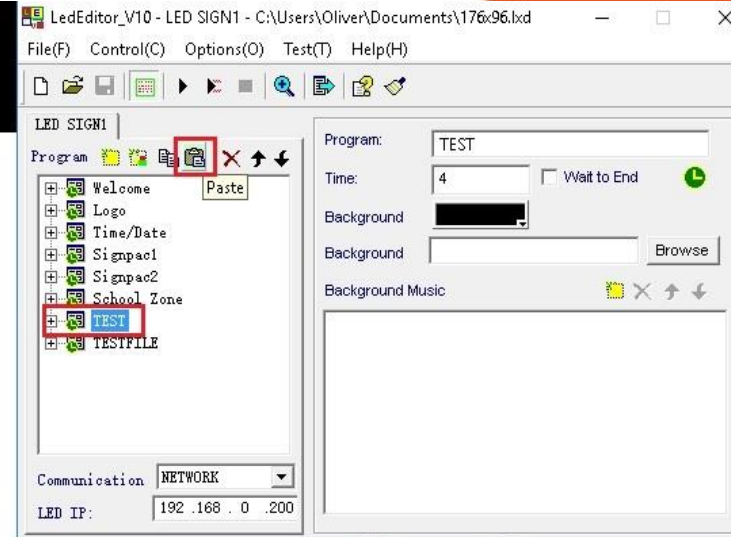
COPY & PASTE METHOD

COPY & PASTE METHOD

THIS IS SOME
SAMPLE TEXT

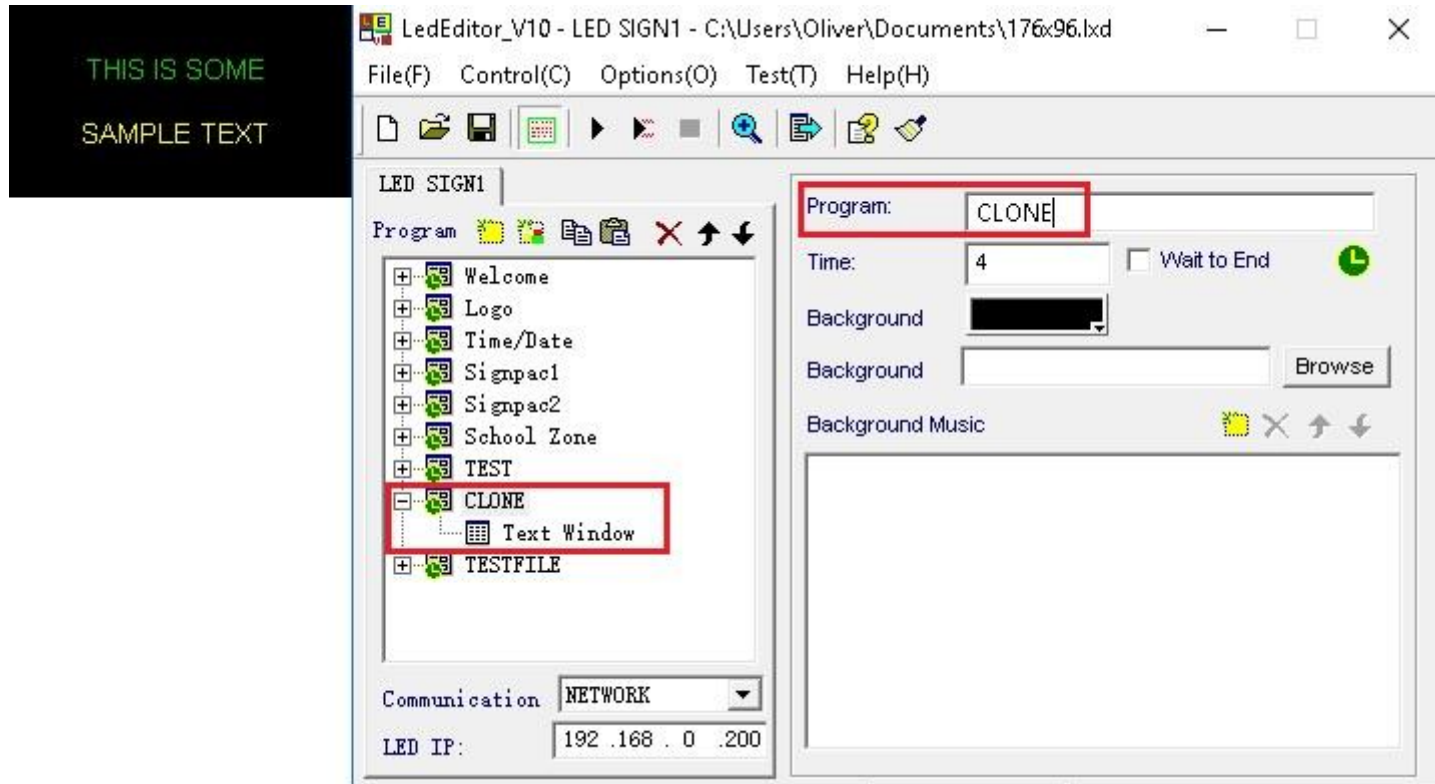


THIS IS SOME
SAMPLE TEXT



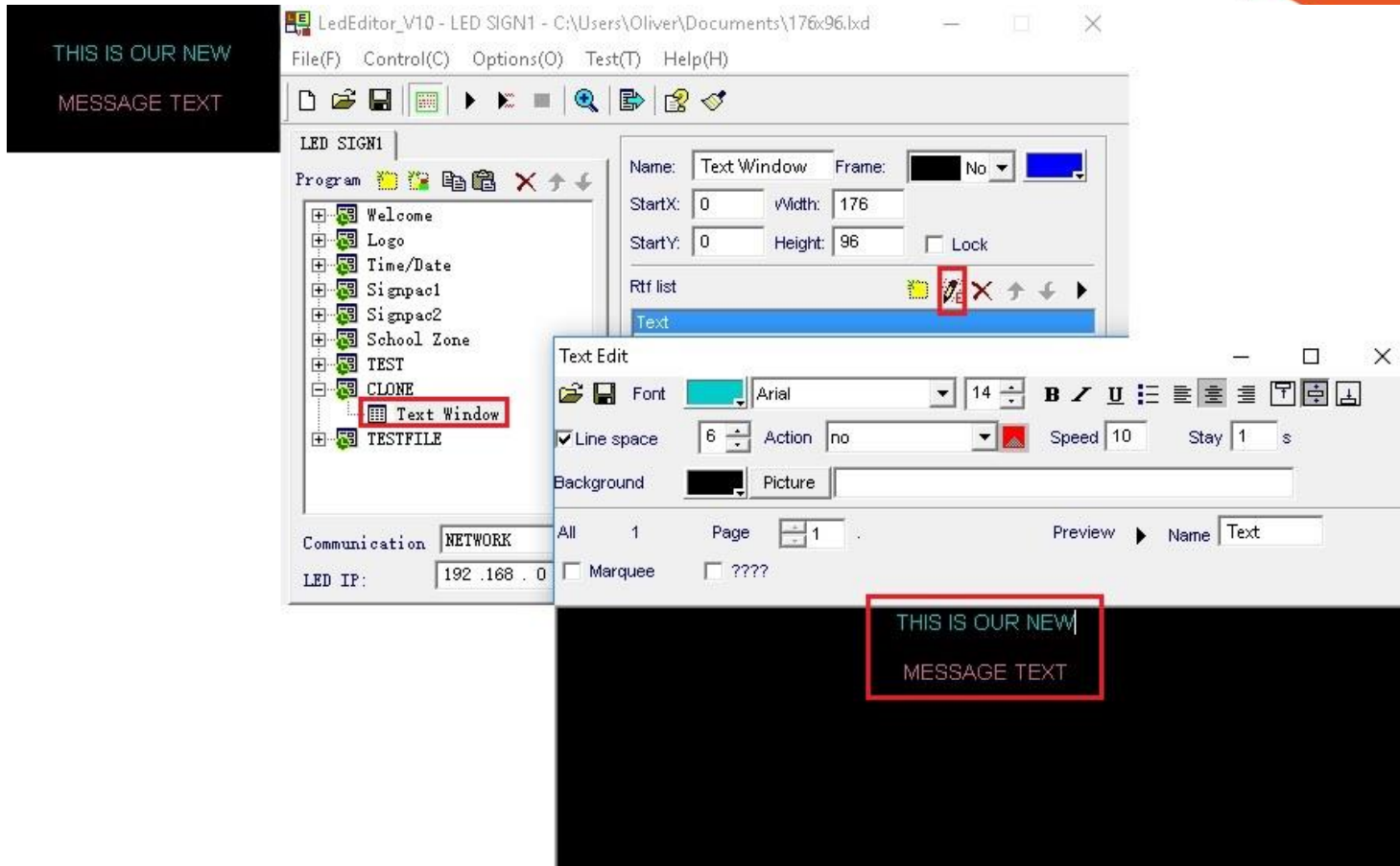
If we already have a step set up with a valid schedule and wish to use it as a template, we can easily duplicate the step and save ourselves time using the copy and paste buttons

COPY & PASTE METHOD



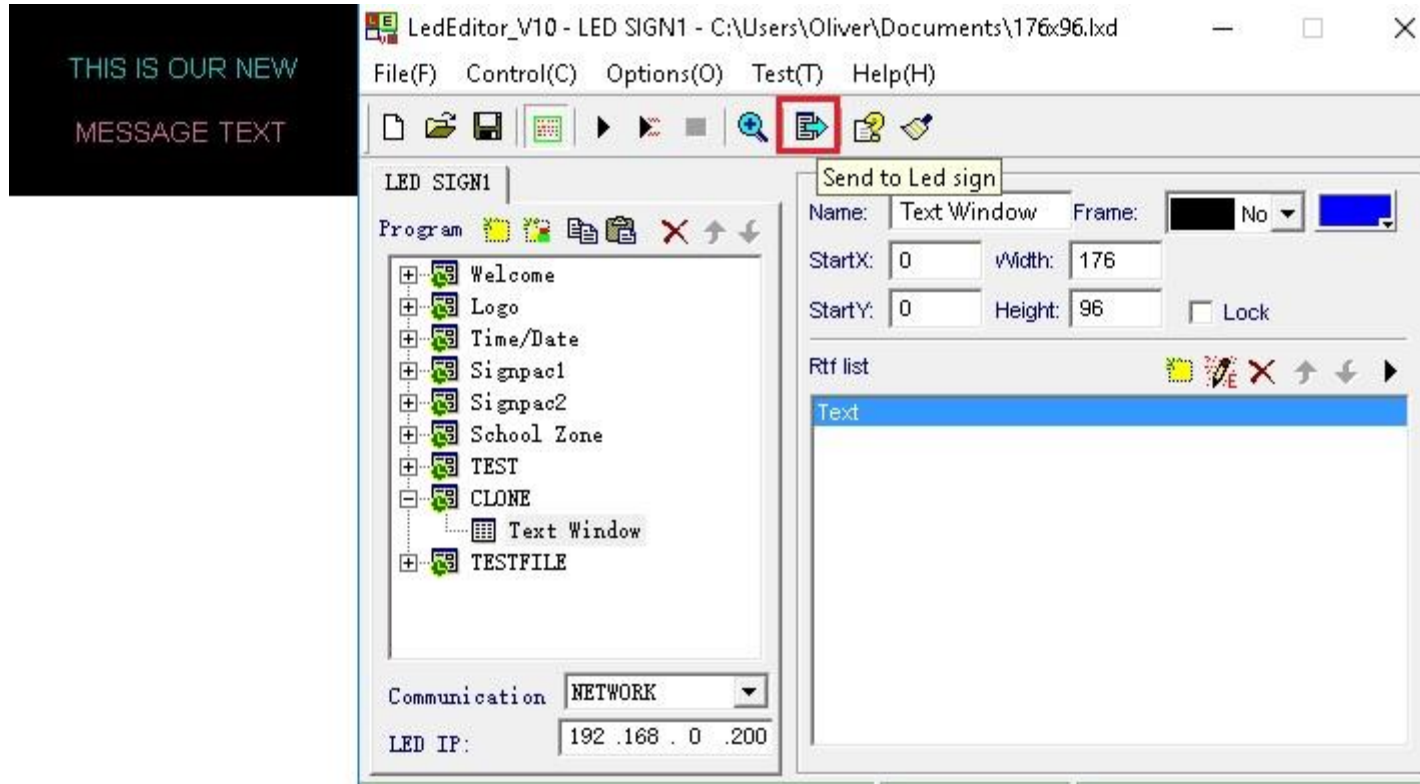
Once you have used copy & paste to duplicate your template, simply rename the new step.

COPY & PASTE METHOD



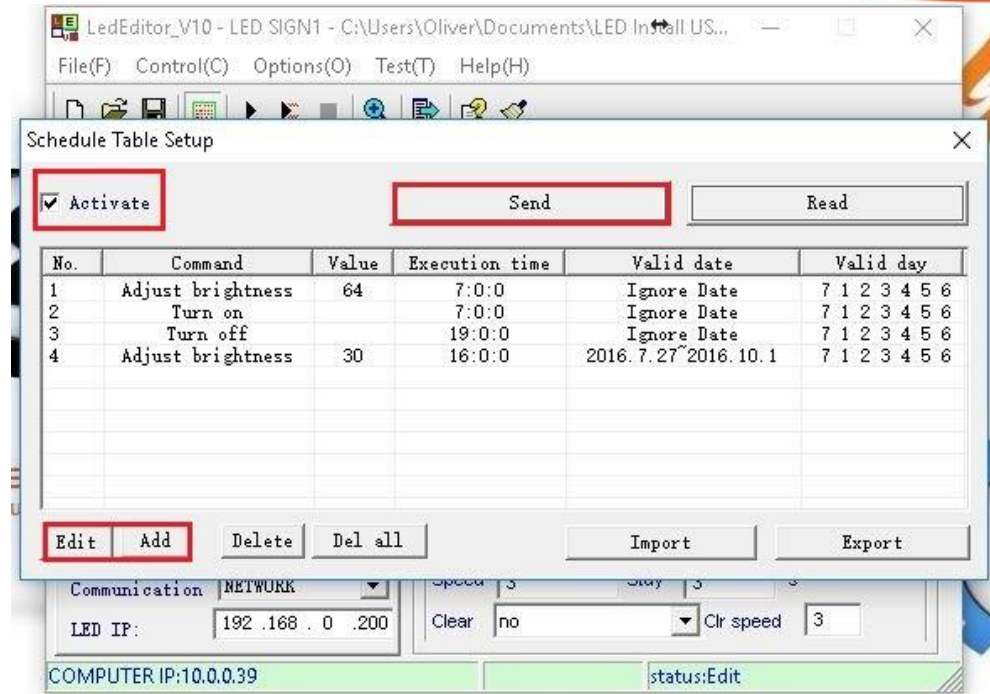
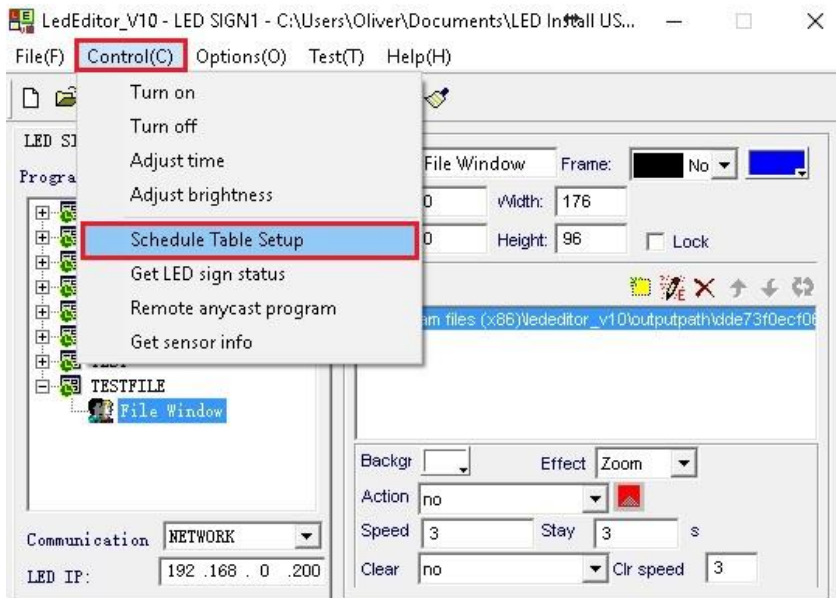
Select the text window, and use the pencil on the right hand side to then edit our text to display our new content. When done editing simply return to the main interface.

COPY & PASTE METHOD



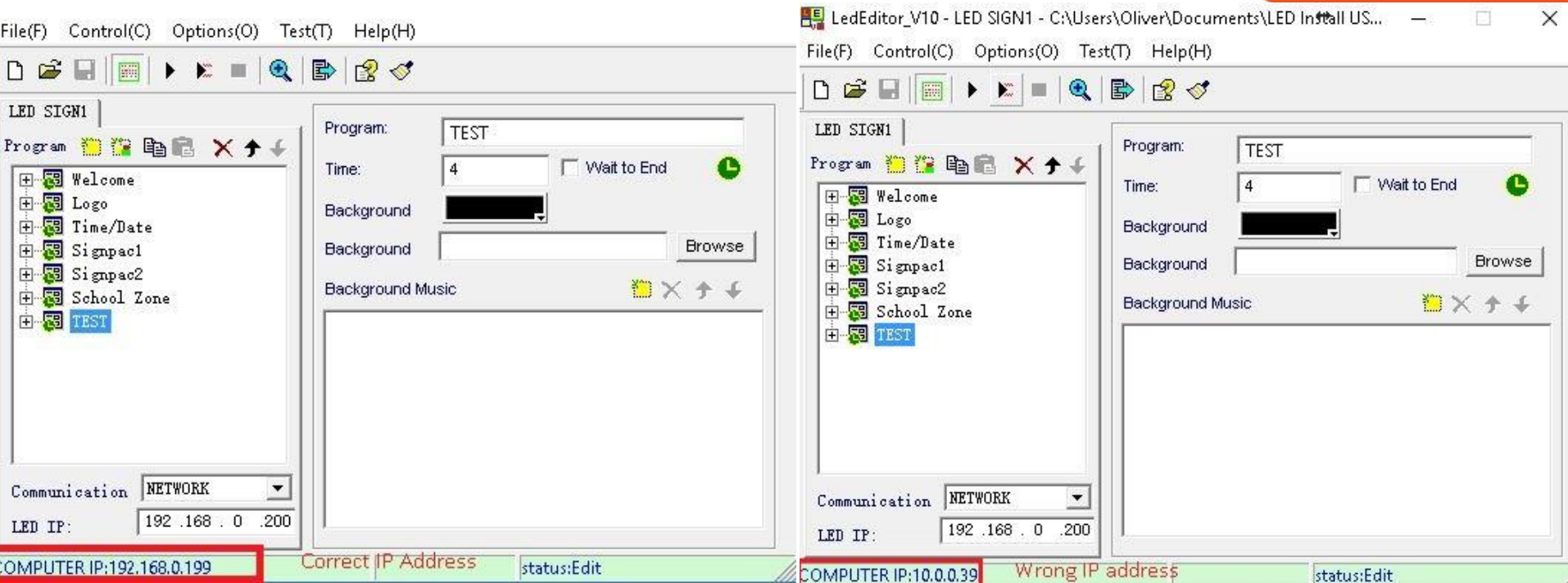
Remember to send our changes to the sign by pressing “Send to Led Sign”. We are done!

SCHEDULE TABLE SETTINGS



Here we can adjust what time the sign turns on and off as well as brightness settings throughout the day

CHECKING IP ADDRESS

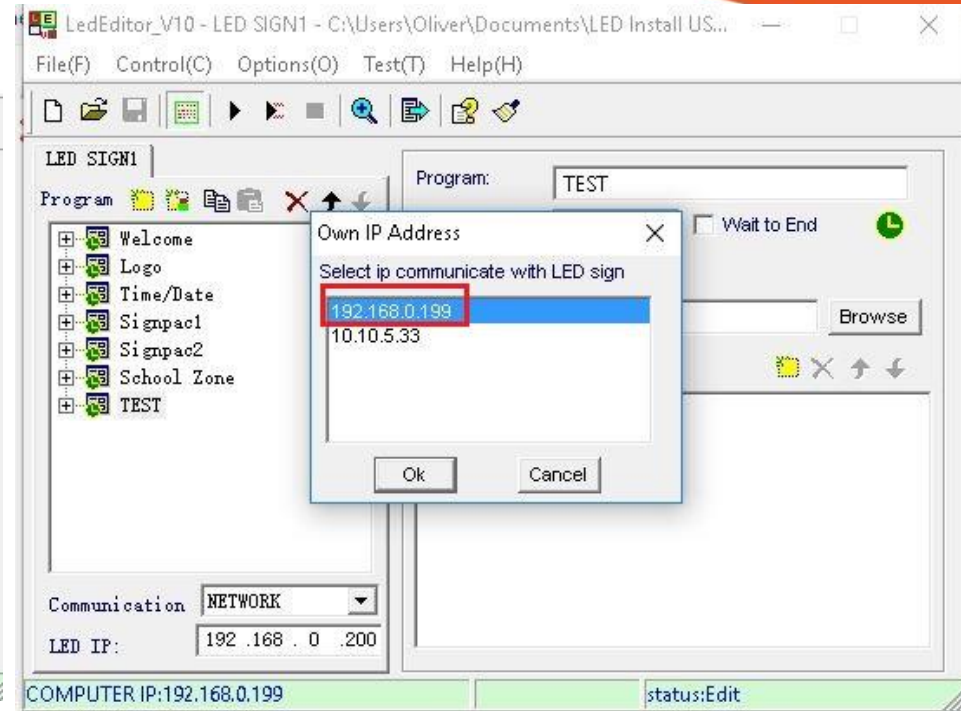
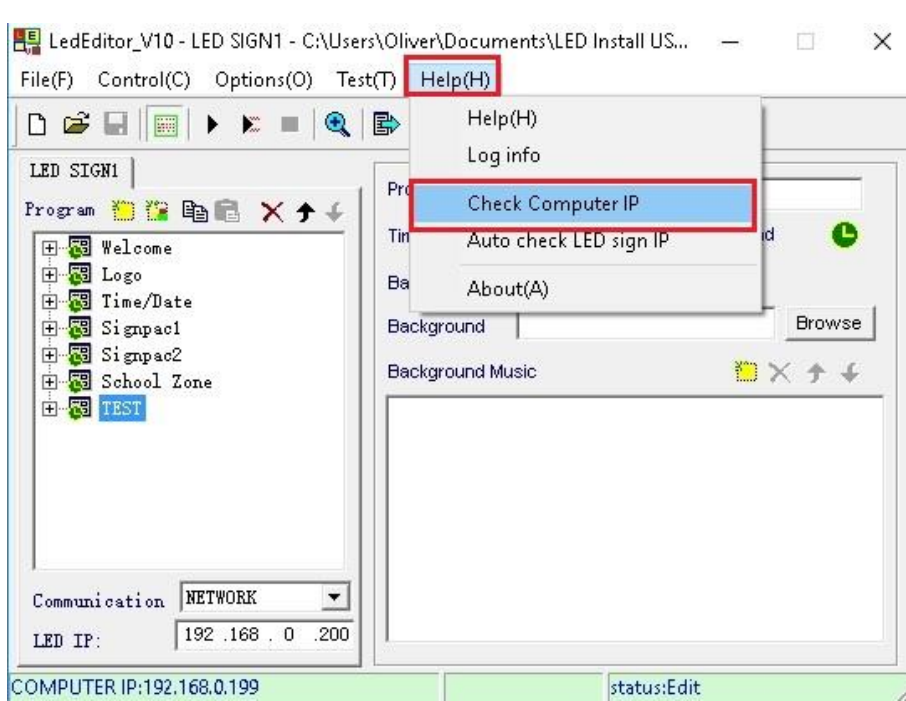


COMPUTER IP:192.168.0.199 Correct IP Address status:Edit

COMPUTER IP:10.0.0.39 Wrong IP address status:Edit

Keep an eye on the COMPUTER IP, It must be on the same range as the LED IP, usually this is 192.168.0.XXX

CHECKING IP ADDRESS



You can change the address listed by following as above and selecting the correct IP